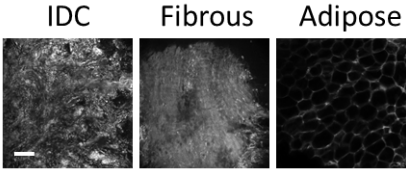


Select representative images

MSER: Vary intensity parameters one at a time

Calculate AF for each image, plot results, and examine images

Select values that correctly isolate nuclei and lead to largest differences between tumor and normal images



Size parameters:

- MaxArea = 500 pixels
- MinArea = 35 pixels

Intensity parameters:

- MaxVariation
- MinDiversity
- Delta

